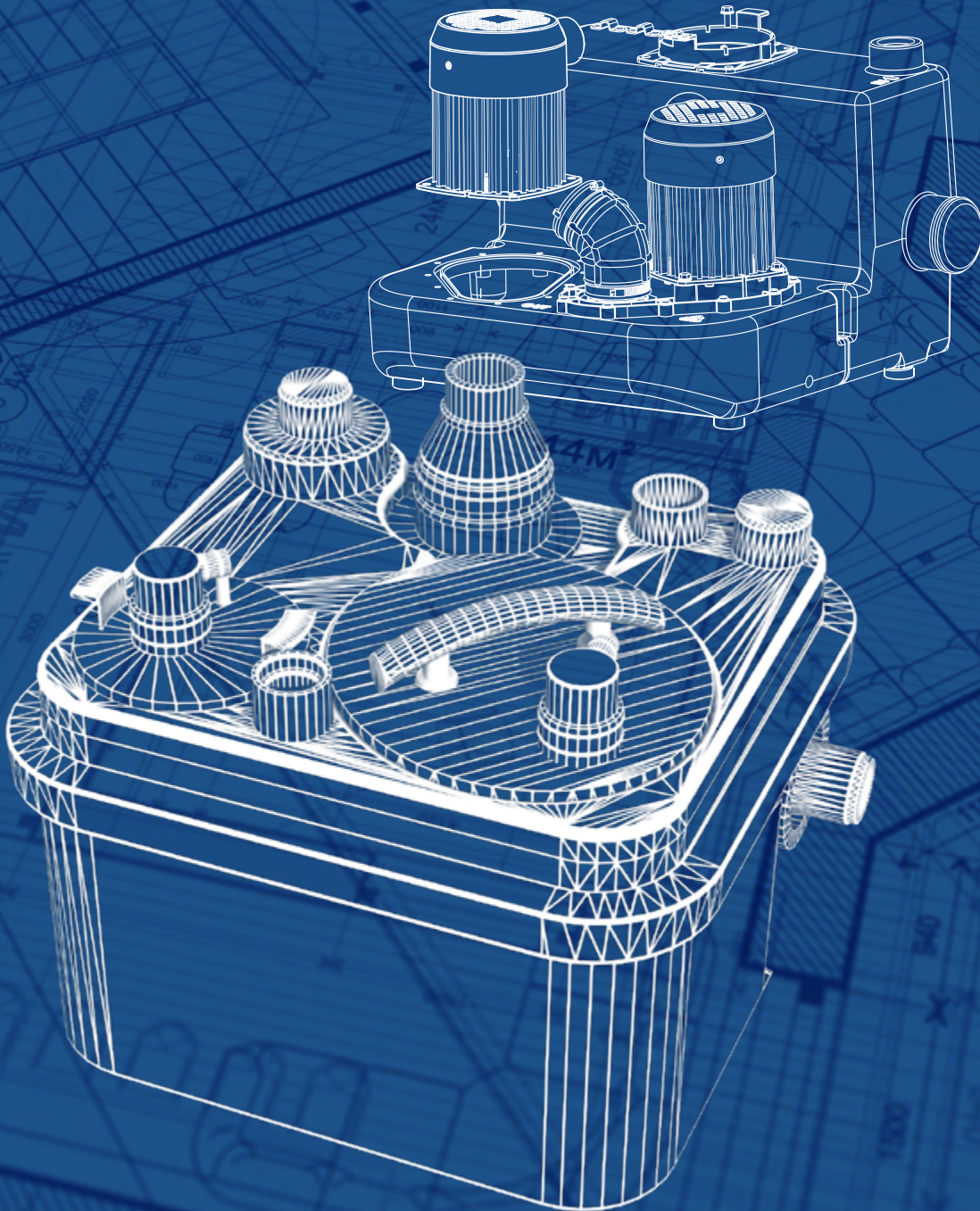


# Saniflo SFA GROUP

OUR **INGENUITY**  
TO EXPRESS YOUR **CREATIVITY**



**COMMERCIAL**  
C A T A L O G / P U M P S & L I F T S T A T I O N S



# MADE IN FRANCE TO SUPERIOR QUALITY STANDARDS

Since 1958, the legendary Sanibroyeur and its rich brand recognition is nestled in this Oise village on a more than 8 hectares site. Daily, about 300 people get together and work hard to continue building its notoriety. Over the years, the Brégy site has seen important investments that has transformed this simple assembly line into a near-autonomous operation.



## TESTING AND DESIGN

It's in the laboratory that the SFA products are designed and come to life. Nothing beats a series of tests to make sure the products are effective and durable.

## COMPONENTS ASSEMBLY

On site, robots and humans work together towards a common objective. When the work requires finesse, operators assemble parts, but when parts are difficult to move or assemble, robots come to the rescue.



## WINDING AND MOTOR MANUFACTURING

SFA has integrated winding and motor assembly since 1960.

Entirely under robot control, a digital camera controls part of the elements to ensure optimal quality every step of the way.



## PRODUCTION OF COMPOSITE AND RUBBER PARTS

To date, the plastics processing department consists of 33 machines and a total of 760 molds.

From the flow of the plastic pellets from the silos to the machines, to the melting and molding of the parts, the process is fully automated.



## MANUFACTURING OF ELECTRONIC BOARDS

In the interest of superior quality, in the last few years, SFA integrated the production of its electronic boards at the Brégy site. These boards are then assembled by the operators.



## LOGISTICS

Shipping is also handled at Brégy. Our infrastructure allows us to ship our products everywhere in the world.



A 3,200 square foot showroom was designed, situated next to a 430 square foot training room for the SFA Academy.

The showroom is open to professionals (distributors, installers, specifiers, etc.), by appointment.

The showroom showcases about 50 SFA products, 6 of which are live and operational: Sanifloor+, Sanipro Xr Up, Saniflush, Sanismart, Sanicompact Pro, and Sanicompact 43.

Also on display, our range of below-ground and above-ground lift stations, cellar pumps, and even our grease traps and separators.



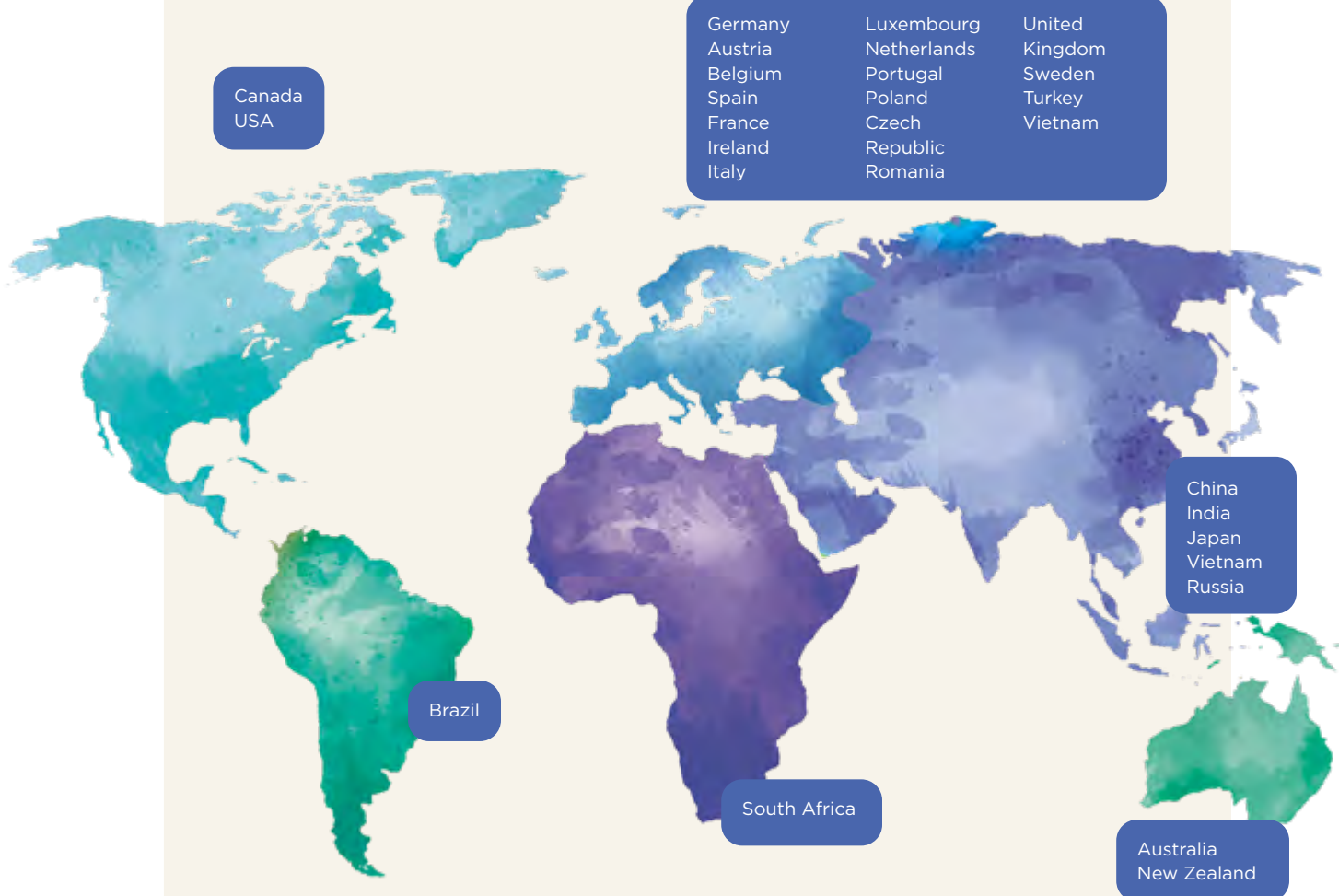
# GROUP SFA: GLOBAL LEADER IN SANITARY PUMP EQUIPMENT

For more than 60 years, Group SFA's subsidiaries have united to bring our professional clients and end users more sanitary solutions to their daily lives.

They provide much more than technological know-how; they provide innovative, reliable, and easy to implement solutions.

## AN INTERNATIONAL PRESENCE

Found in 27 countries on five continents, the Group continues its international growth through branches that have forged partnerships with local industry professionals. These are carefully selected and trained to maintain the Group's reputation of performance, quality, and service.



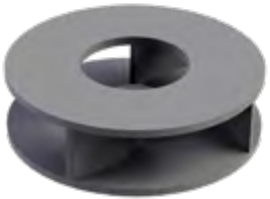
### NUMEROUS EXPORT COUNTRIES

Cyprus, Malta, Norway, Baltic countries, Croatia, Israel, Ukraine, Bulgaria, Middle East, Overseas France, Algeria, Morocco, Tunisia, Egypt, Greece, Sudan, Finland, Western Africa, ...



### STAINLESS STEEL GRINDER

Sanicubic 1  
Sanicubic 2



### MULTI-CHANNEL IMPELLER

Sanicom 1  
Sanicom 2



### VORTEX IMPELLER

Sanicubic 1 VX  
Sanicubic 2 VX

## Hydraulic technologies

.....

### From expertise to performance

The very basis of our powerful flowrates is our hydraulic system. It allows for the free flow of fluids and loads while allowing an efficient, controlled, and powerful discharge.

SFA is constantly innovating to develop new technologies adapted to every type of fluid and condition, and therefore ensure the optimal performance of the pumps, as well as their durability.

# SFA Above-ground pumps

Our above-ground pumps have many advantages: being able to install them indoor (in a mechanical room or a basement, for example) reduces the installation costs and facilitates access for maintenance.



## **Sanicom** Gray water

- Sinks, bars, dishwashers, glass rinsers (bakeries, laboratories, bars, etc.)
- Bathrooms with sinks, showers, urinals (sports centers, restaurants, medical centers)
- Medical/healthcare facilities and manufacturing applications
- Commercial washing machines, industrial-scale dishwashers, hydroponic crop growing



## **Sanicubic Grinder** Wastewater

- Detached houses
- House extensions, pool house addition
- Plant expansion (addition of washrooms, sinks, urinals)
- On-site living quarters, cultural events
- Modular applications, building subdivisions



## **Sanicubic Vortex** Wastewater

- One or more apartments connected to a common station
- Bars, restaurants
- Stadiums
- Hotel, campsites, offices
- Modular applications

# Sanicom® 1

## Gray water (Residential, Commercial Applications)

The Sanicom 1 drain pump is used to pump gray water away from a variety of fixtures in commercial applications. The system is able to discharge the waste up to 25 feet vertical and/or 250 feet horizontal. This model was designed to sustain the toughest applications in commercial installations where hot water can be an issue as it is capable of handling up to 194°F as well as grease, heavy-duty cleaning products, and other aggressive liquids.

The pump has an internal dip tube which turns the motor on or off. An integrated alarm detects high levels of water. An audible and visual alarm is also available as an option.



Part# 018

### PERFORMANCE

- Maximum pumping height: 25 Ft (44 Ft Shut-off)
- Maximum flow rate: 50 GPM

### ADVANTAGES

- Easy to install, directly on the ground
- Easy access for maintenance
- Two 2" low inlets on either side
- Low activation level
- Manual override
- Integrated control panel
- Water level alarm (optional)



### OPTIONAL ACCESSORY

Wired alarm unit



### CONNECTIONS



➔ Inlet diameter: 2"

➔ Discharge diameter: 1"

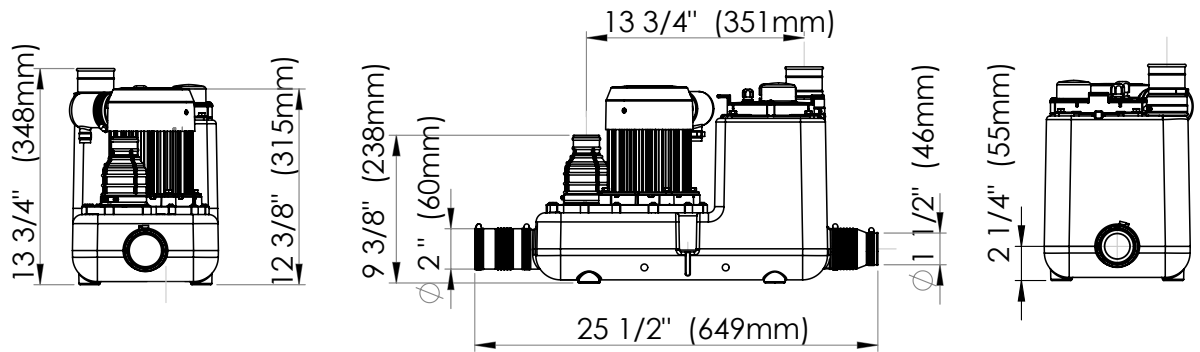
➔ Vent diameter: 1-1/4"



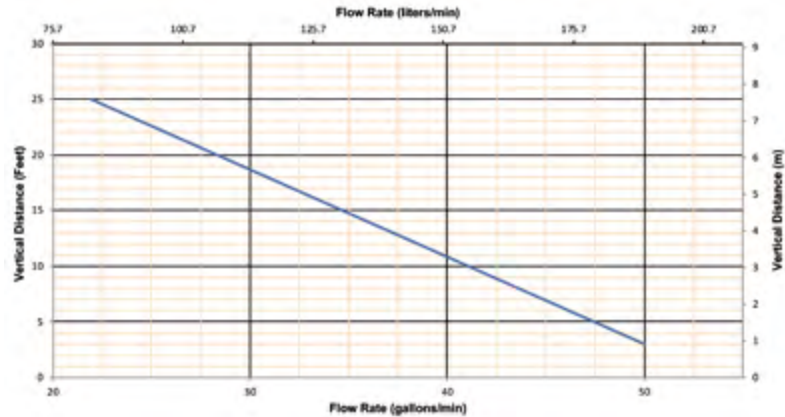
Multi-channel impeller

# ABOVE-GROUND PUMPS

## DIMENSIONS



## FLOW CURVE



## Technical Description

**Sanicom 1 v02** Part# 018

|  |                                  |
|--|----------------------------------|
| Type of control                            | Integrated keypad                |
| <b>Materials</b>                           |                                  |
| Tank                                       | HDPE (high density polyethylene) |
| Pump body                                  | PA12-GF (reinforced plastic)     |
| Motor body                                 | Aluminum                         |
| Impeller                                   | PA6-GF (reinforced plastic)      |
| <b>Electrical characteristics</b>          |                                  |
| Power supply (V)                           | 120                              |
| Frequency (Hz)                             | 60                               |
| Power (HP)                                 | 1.3                              |
| Electrical current (Amps)                  | 8.3 (Max)                        |
| Protection index                           | IPX4                             |
| <b>Hydraulics</b>                          |                                  |
| Maximum height (ft)                        | 25 (44 Ft Shut-off)              |
| Maximum flow rate (gpm)                    | 50                               |
| Inlet diameter (in)                        | 2                                |
| Discharge diameter (in)                    | 1                                |
| Vent diameter (in)                         | 1-1/4                            |
| Total volume (gal)                         | 3.7                              |
| Useful volume (gal)                        | 1.5                              |
| On/off level (in)                          | 5.25/2                           |
| Alarm level (in)                           | 8                                |
| Solids handling (in)                       | 3/8                              |
| Maximum incoming water temperature (5 min) | 194 F                            |
| Impeller/blade type                        | Multi-channel impeller           |
| Operation type                             | Pneumatic                        |
| Min. fixture height (in)                   | 10                               |
| Noise level (dBA, measured at 3 Ft)        | ≤68                              |
| Method of activation                       | Pressure switch / circuit board  |
| <b>Identification and logistics</b>        |                                  |
| Gross weight (lb)                          | 22                               |
| UPC code                                   | 8-59925-00218-3                  |
| Certifications                             | CSA, IAPMO                       |

# Sanicom<sup>®</sup> 2

## Gray water (Commercial, Industrial Applications)

The Sanicom 2 duplex drain pump system is used to pump gray water away from a variety of fixtures in commercial and industrial applications. The system is able to discharge the waste up to 32 feet vertical and/or 390 feet horizontal. This model was designed to sustain the toughest applications in commercial installations where hot water can be an issue as it is capable of handling up to 194°F as well as grease, heavy-duty cleaning products, and other aggressive liquids.

The pump has internal dip tubes that control the operation of the motor as well as the alarm system. A remote wired alarm is available as an option.



Part# 028

### PERFORMANCE

- Maximum pumping height: 32 Ft (53 Ft Shut-off)
- Maximum flow rate: 140 GPM (Both motors in operation)



### ADVANTAGES

- Easy to install, directly on the ground
- Easy access for maintenance
- Two low 2" inlets on either side.
- Low activation level
- Integrated control panel with manual override
- Two independent alternating pumps
- Water level alarm included
- External control box with manual override and audible and visual alarm



### STANDARD CONTROL

Classic control box



### OPTIONAL ACCESSORY

Wired alarm unit



### CONNECTIONS



- ➔ Inlet diameter: 2"
- ➔ Discharge diameter: 1-1/2"
- ↕ Vent diameter: 1-1/2"

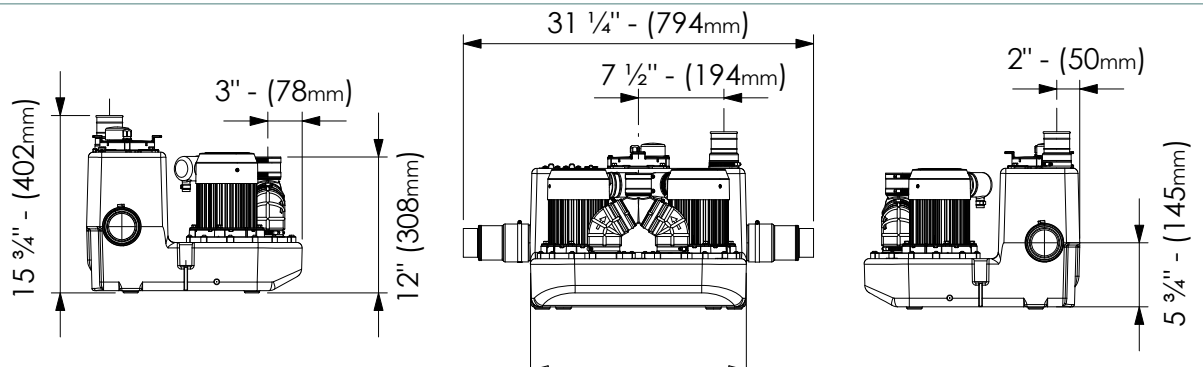


Multi-channel impeller

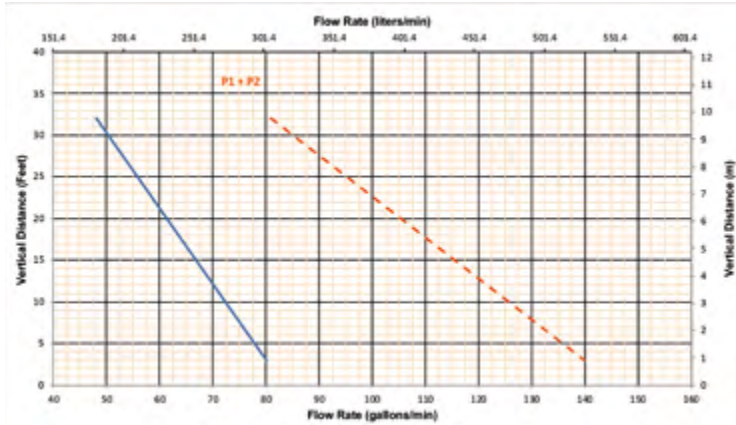


# ABOVE-GROUND PUMPS

## DIMENSIONS



## FLOW CURVE



## Technical Description

Sanicom 2 v02 Part# 028

|  |                                  |
|--|----------------------------------|
| Type of control                            | Classic control box              |
| <b>Materials</b>                           |                                  |
| Tank                                       | HDPE (high density polyethylene) |
| Pump body                                  | PA12-GF (reinforced plastic)     |
| Motor body                                 | Aluminum                         |
| Impeller                                   | PA6-GF (reinforced plastic)      |
| <b>Electrical characteristics</b>          |                                  |
| Power supply (V)                           | 220-240 (208V min)               |
| Frequency (Hz)                             | 60                               |
| Power (HP)                                 | 2 × 2                            |
| Electrical current (Amps)                  | 16 (Max)                         |
| Protection index                           | IPX4                             |
| <b>Hydraulics</b>                          |                                  |
| Maximum height (ft)                        | 32 (53 Ft Shut-off)              |
| Maximum flow rate (gpm)                    | 140 (Both motors in operation)   |
| Inlet diameter (in)                        | 2                                |
| Discharge diameter (in)                    | 1-1/2                            |
| Vent diameter (in)                         | 1-1/2                            |
| Total volume (gal)                         | 9                                |
| Useful volume (gal)                        | 3.4                              |
| On/off level (in)                          | 5.75/2.5                         |
| Alarm level (in)                           | 8.5                              |
| Solids handling (in)                       | 3/8                              |
| Maximum incoming water temperature (5 min) | 194 F                            |
| Impeller/blade type                        | Multi-channel impeller           |
| Operation type                             | Pneumatic                        |
| Min. fixture height (in)                   | 10                               |
| Noise level (dBA, measured at 3 Ft)        | ≤68                              |
| Method of activation                       | Pressure switch / circuit board  |
| <b>Identification and logistics</b>        |                                  |
| Gross weight (lb)                          | 57                               |
| UPC code                                   | 8-59925-00228-2                  |
| Certifications                             | CSA, IAPMO                       |

# Sanicubic<sup>®</sup> 1

## Wastewater (Residential, Commercial Applications)

The Sanicubic 1 is a 1 HP heavy duty simplex grinder system used to pump away wastewater from several bathrooms and fixtures from an entire building structure. This system is able to discharge the waste up to 36 feet vertical and/or 328 feet horizontal.

It incorporates a grinder system which is ideal for uncontrolled environments in both residential and commercial applications (ie. rental unit, offices, warehouses, etc). The Sanicubic 1 is designed to handle sanitary products that may have been flushed down the toilet; such may consist of condoms, sanitary napkins, q-tips, dental floss, etc.



Part# 089

### PERFORMANCE

- Maximum pumping height: 36 Ft (45 Ft Shut-off)
- Maximum flow rate: 50 GPM

### ADVANTAGES

- Installed directly on the ground
- Easy access for maintenance
- Four inlets, two of which are low (1-1/2" and 4")
- System activates with a fail-proof air pressure switch system with triple redundancy
- Stainless steel grinder
- Integrated control panel with manual override
- Rated IP68 with external control box and alarm standard



### STANDARD ACCESSORIES

Classic control box



Wired alarm unit



### CONNECTIONS



➔ Inlet diameter: 1-1/2", 4"

➔ Discharge diameter: 1-1/2"

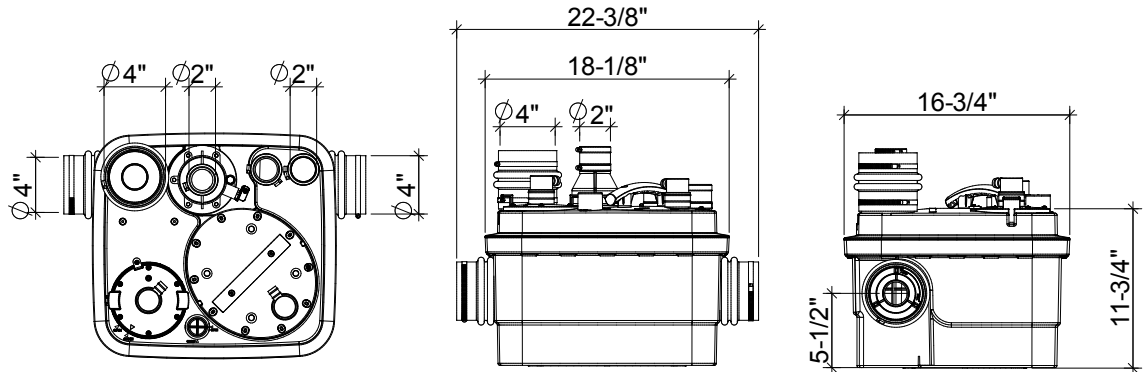
↔ Vent diameter: 1-1/2"



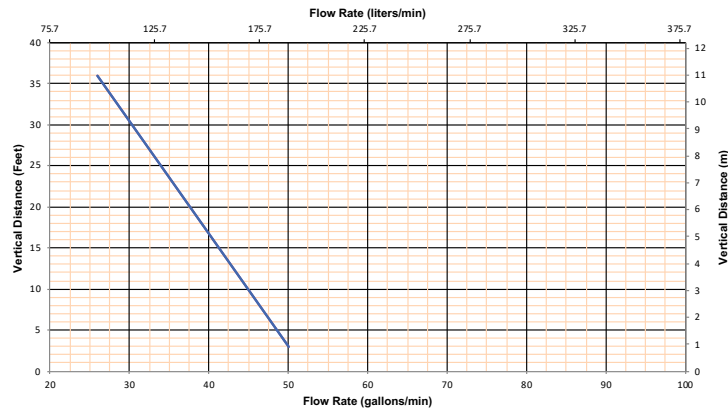
Stainless steel grinder

# ABOVE-GROUND PUMPS

## DIMENSIONS



## FLOW CURVE



## Technical Description

|  |  | Sanicubic 1 Part# 089                   |
|--|--|---|
| Type of control                            |  | Classic control box                     |
| <b>Materials</b>                           |  |   |
| Tank                                       |  | PP                                      |
| Pump body                                  |  | PA12-GF (reinforced plastic)            |
| Motor body                                 |  | PA12-GF (reinforced plastic)            |
| Impeller                                   |  | PP GF (reinforced plastic)              |
| <b>Electrical characteristics</b>          |  |   |
| Power supply (V)                           |  | 120 (Part# 089) / 220-240 V (Part# 069) |
| Frequency (Hz)                             |  | 60                                      |
| Power (HP)                                 |  | 1                                       |
| Electrical current (Amps)                  |  | 4.5 (Max)                               |
| Operating mode                             |  | S3 30 %                                 |
| Protection index                           |  | IP68                                    |
| <b>Hydraulics</b>                          |  |   |
| Maximum height (ft)                        |  | 36                                      |
| Maximum flow rate (gpm)                    |  | 50                                      |
| Inlet diameter (in)                        |  | 1-1/2, 4                                |
| Discharge diameter (in)                    |  | 1-1/2                                   |
| Vent diameter (in)                         |  | 1-1/2                                   |
| Total volume (gal)                         |  | 8.5                                     |
| Useful volume (gal)                        |  | 2.6                                     |
| On/off level (in)                          |  | 5.5/2.75                                |
| Alarm level (in)                           |  | 8.25                                    |
| Maximum incoming water temperature (5 min) |  | 158 F                                   |
| Impeller/blade type                        |  | Stainless steel grinder                 |
| Operation type                             |  | Pneumatic                               |
| Min. fixture height (in)                   |  | 10                                      |
| Noise level (dBA, measured at 3 Ft)        |  | ≤68                                     |
| Method of activation                       |  | Pressure switch / circuit board         |
| <b>Identification and logistics</b>        |  |   |
| Gross weight (lb)                          |  | 50                                      |
| UPC code                                   |  | 8-59925-00289-3 (120V)                  |
| Certifications                             |  | CSA, IAPMO                              |

# Sanicubic<sup>®</sup> 2

## Wastewater (Commercial, Industrial Applications)

The Sanicubic 2 is heavy duty duplex grinder system used to pump away wastewater from several bathrooms and fixtures from an entire building structure. This system is able to discharge the waste up to 36 feet vertical and/or 328 feet horizontal.

It incorporates a grinder system which is ideal for uncontrolled environments in both residential and commercial applications (ie. rental unit, offices, warehouses, etc). The Sanicubic 2 is designed to handle sanitary products that may have been flushed down the toilet; such may consist of condoms, sanitary napkins, q-tips, dental floss, etc.



Part# 029

### PERFORMANCE

- Maximum pumping height: 36 Ft (45 Ft Shut-off)
- Maximum flow rate: 90 GPM (Both motors in operation)

### ADVANTAGES

- Installed directly on the ground
- Easy access for maintenance
- Two pumps operating alternately
- Five inlets, two of which are low (1-1/2", 4")
- System activates with a fail-proof air pressure switch system with triple redundancy
- Stainless steel grinder
- Rated IP68 with external control box and alarm standard



### STANDARD ACCESSORIES

Classic control box



Wired alarm unit



### CONNECTIONS



➡ Inlet diameter: 1-1/2", 4"

➡ Discharge diameter: 1-1/2"

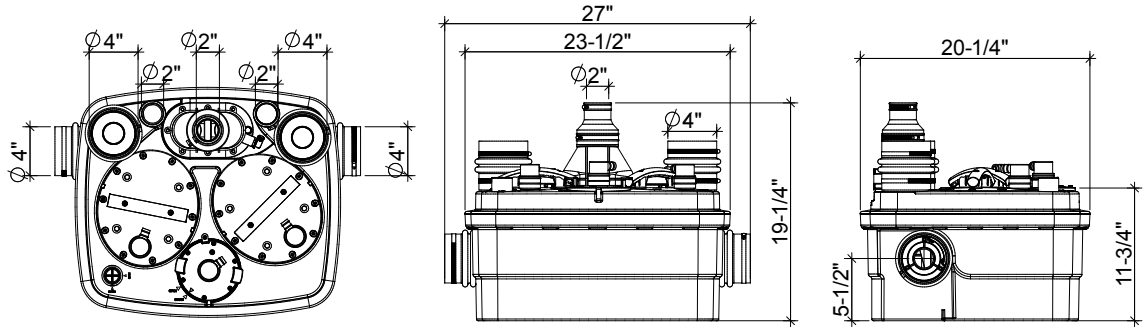
↔ Vent diameter: 1-1/2"



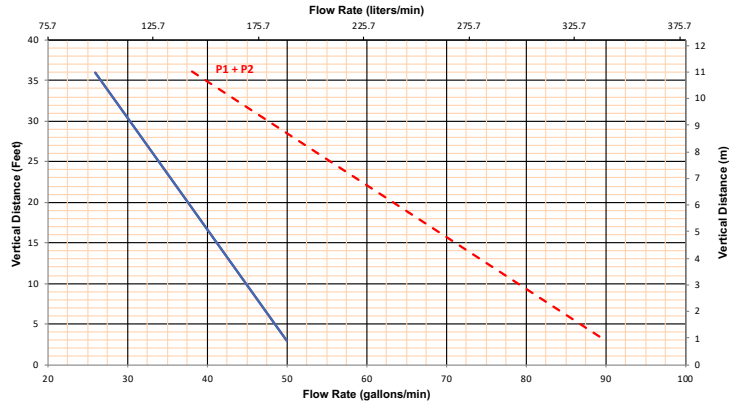
Stainless steel grinder

# ABOVE-GROUND PUMPS

## DIMENSIONS



## FLOW CURVE



## Technical Description

|  |  | Sanicubic 2 Part# 029           |
|--|--|---------------------------------|
| Type of control                            |  | Classic control box             |
| <b>Materials</b>                           |  |                                 |
| Tank                                       |  | PP                              |
| Pump body                                  |  | PA12-GF (reinforced plastic)    |
| Motor body                                 |  | PA12-GF (reinforced plastic)    |
| Impeller                                   |  | PP GF (reinforced plastic)      |
| <b>Electrical characteristics</b>          |  |                                 |
| Power supply (V)                           |  | 220-240 V (208V min)            |
| Frequency (Hz)                             |  | 60                              |
| Power (HP)                                 |  | 2 × 1                           |
| Electrical current (Amps)                  |  | 13 (Max)                        |
| Operating mode                             |  | S3 50 %                         |
| Protection index                           |  | IP68                            |
| <b>Hydraulics</b>                          |  |                                 |
| Maximum height (ft)                        |  | 36                              |
| Maximum flow rate (gpm)                    |  | 90 (Both motors in operation)   |
| Inlet diameter (in)                        |  | 1-1/2, 4                        |
| Discharge diameter (in)                    |  | 1-1/2                           |
| Vent diameter (in)                         |  | 1-1/2                           |
| Total volume (gal)                         |  | 11.9                            |
| Useful volume (gal)                        |  | 4.6                             |
| On/off level (in)                          |  | 5.5/2.75                        |
| Alarm level (in)                           |  | 8.25                            |
| Maximum incoming water temperature (5 min) |  | 158 F                           |
| Impeller/blade type                        |  | Stainless steel grinder         |
| Operation type                             |  | Pneumatic                       |
| Min. fixture height (in)                   |  | 10                              |
| Noise level (dBA, measured at 3 Ft)        |  | ≤68                             |
| Method of activation                       |  | Pressure switch / circuit board |
| <b>Identification and logistics</b>        |  |                                 |
| Gross weight (lb)                          |  | 77                              |
| UPC code                                   |  | 8-59925-00229-9                 |
| Certifications                             |  | CSA, IAPMO                      |

# Sanicubic® 1VX

## Wastewater (Residential, Commercial Applications)

The Sanicubic 1 VX is heavy duty simplex vortex system used to pump away wastewater from several bathrooms and fixtures from an entire building structure. This system is able to discharge the waste up to 36 feet vertical and/or 328 feet horizontal using 2" pipe or up to 20 feet vertical and/or 1640 feet horizontal using a 4" pipe.

This lift station is ideal for uncontrolled environments in both residential and commercial applications (ie. rental unit, offices, warehouses, etc). The Sanicubic 1 VX incorporates a vortex impeller capable of handling up to 2" solids.



Part# 049

### PERFORMANCE

- Maximum pumping height: 36 Ft (2"), 20 Ft (4") - (43 Ft Shut-off)
- Maximum flow rate: 125 GPM (2"), 137 GPM (4")



### ADVANTAGES

- Installed directly on the ground
- Easy access for maintenance
- System activates with a fail-proof air pressure switch system with triple redundancy
- Vortex impeller (up to 2" solids)
- Direct and safe access to pump
- External control box included
- Wired alarm included
- Rated IP68 with external control box and alarm standard

### STANDARD ACCESSORIES

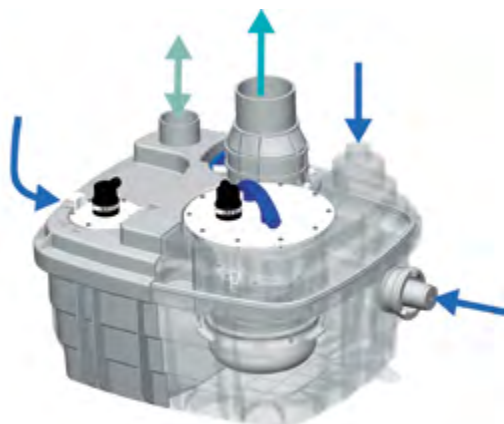
Classic control box



Wired alarm unit



### CONNECTIONS



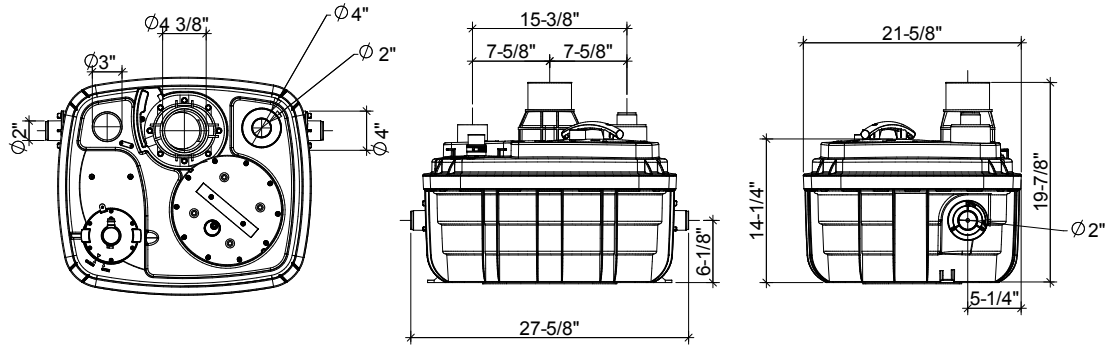
- ➔ Inlet diameter: 1-1/2", 4"
- ➔ Discharge diameter: 1-1/2", 4"
- ↔ Vent diameter: 1-1/2"



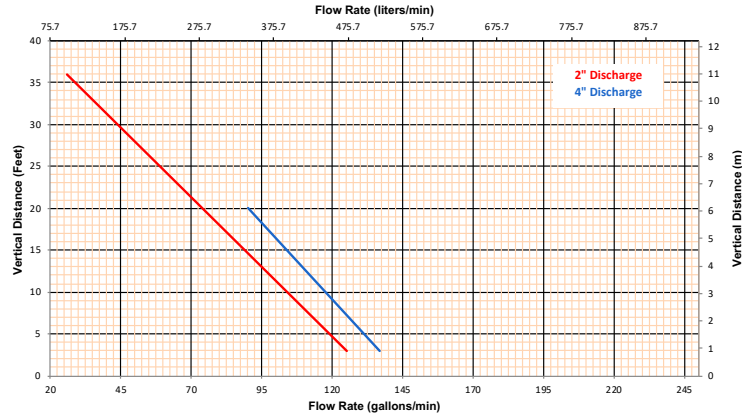
Vortex impeller

# ABOVE-GROUND PUMPS

## DIMENSIONS



## FLOW CURVE



## Technical Description

### Sanicubic 1 VX Part# 049

|  |                                 |
|--|---------------------------------|
| Type of control                            | Classic control box             |
| <b>Materials</b>                           |                                 |
| Tank                                       | PP GF (reinforced plastic)      |
| Pump body                                  | PA12-GF (reinforced plastic)    |
| Motor body                                 | PA12-GF (reinforced plastic)    |
| Impeller                                   | PPO GF (reinforced plastic)     |
| <b>Electrical characteristics</b>          |                                 |
| Power supply (V)                           | 220-240 (208V min)              |
| Frequency (Hz)                             | 60                              |
| Power (HP)                                 | 1.5                             |
| Electrical current (Amps)                  | 12 (Max)                        |
| Operating mode                             | S3 15 %                         |
| Protection index                           | IP68                            |
| <b>Hydraulics</b>                          |                                 |
| Maximum height (ft)                        | 36 (2"), 20 (4")                |
| Maximum flow rate (gpm)                    | 125 (2"), 137 (4")              |
| Inlet diameter (in)                        | 1-1/2, 4                        |
| Discharge diameter (in)                    | 2, 4                            |
| Vent diameter (in)                         | 2-1/2                           |
| Total volume (gal)                         | 15.9                            |
| Useful volume (gal)                        | 5.5                             |
| On/off level (in)                          | 6.5/3.75                        |
| Alarm level (in)                           | 9.25                            |
| Solids handling (in)                       | 2"                              |
| Maximum incoming water temperature (5 min) | 158 F                           |
| Impeller/blade type                        | Vortex impeller                 |
| Operation type                             | Pneumatic                       |
| Min. fixture height (in)                   | 11                              |
| Noise level (dBA, measured at 3 Ft)        | ≤70                             |
| Method of activation                       | Pressure switch / circuit board |
| <b>Identification and logistics</b>        |                                 |
| Gross weight (lb)                          | 68                              |
| UPC code                                   | 8-59925-00249-7                 |
| Certifications                             | CSA, IAPMO                      |

# Sanicubic® 2VX

## Wastewater (Commercial, Industrial Applications)

The Sanicubic 2 VX is a heavy duty duplex vortex system used to pump away wastewater from several bathrooms and fixtures from an entire building structure. This system is able to discharge the waste up to 36 feet vertical and/or 328 feet horizontal using 2" pipe or up to 20 feet vertical and/or 1640 feet horizontal using a 4" pipe.

This lift station is ideal for uncontrolled environments in both residential and commercial applications (ie. rental unit, offices, warehouses, etc). The Sanicubic 2VX incorporates a couple of vortex impellers capable of handling up to 2" solids



Part# 099

### PERFORMANCE

- Maximum pumping height: 36 Ft (2"), 20 Ft (4") - (43 Ft Shut-off)
- Maximum flow rate: 145 GPM (2"), 250 GPM (4") Both motors in operation



### ADVANTAGES

- Installed directly on the ground
- Easy access for maintenance
- Five inlets, two of which are low (1-1/2", 4")
- System activates with a fail-proof air pressure switch system with triple redundancy
- Two vortex impellers
- Motors operating alternately
- Rated IP68 with external control box and alarm standard

### STANDARD ACCESSORIES

Classic control box



Wired alarm unit



### CONNECTIONS



- ➔ Inlet diameter: 1-1/2", 4"
- ➔ Discharge diameter: 2", 4"
- ➔ Vent diameter: 2-1/2"

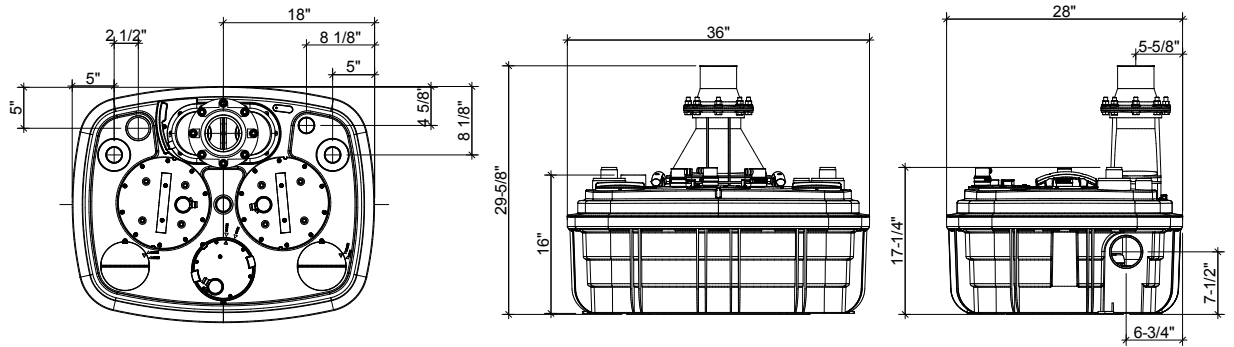


Vortex impeller

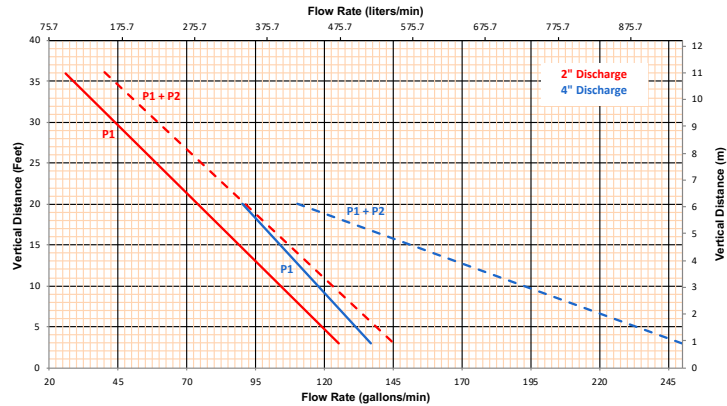


# ABOVE-GROUND PUMPS

## DIMENSIONS



## FLOW CURVE



## Technical Description

### Sanicubic 2VX Part# 099

|  |   |
|--|---|
| Type of control                            | Classic control box                         |
| <b>Materials</b>                           |   |
| Tank                                       | PP GF (reinforced plastic)                  |
| Pump body                                  | PA12-GF (reinforced plastic)                |
| Motor body                                 | PA12-GF (reinforced plastic)                |
| Impeller                                   | PPO GF (reinforced plastic)                 |
| <b>Electrical characteristics</b>          |   |
| Power supply (V)                           | 220-240 (208V min)                          |
| Frequency (Hz)                             | 60  |
| Power (HP)                                 | 2 × 1.5                                     |
| Electrical current (Amps)                  | 12 (Max)                                    |
| Operating mode                             | S3 30 %                                     |
| Protection index                           | IP68  |
| <b>Hydraulics</b>                          |   |
| Maximum height (ft)                        | 36 (2"), 20 (4")                            |
| Maximum flow rate (gpm)                    | 145 (2"), 250 (4") Both motors in operation |
| Inlet diameter (in)                        | 1-1/2, 4                                    |
| Discharge diameter (in)                    | 2, 4  |
| Vent diameter (in)                         | 2-1/2                                       |
| Total volume (gal)                         | 31.7  |
| Useful volume (gal)                        | 6.9   |
| On/off level (in)                          | 6.5/3.75                                    |
| Alarm level (in)                           | 9.25  |
| Solids handling (in)                       | 2   |
| Maximum incoming water temperature (5 min) | 158 F                                       |
| Impeller/blade type                        | Vortex impeller                             |
| Operation type                             | Pneumatic                                   |
| Min. fixture height (in)                   | 11  |
| Noise level (dBA, measured at 3 Ft)        | ≤70   |
| Method of activation                       | Pressure switch / circuit board             |
| <b>Identification and logistics</b>        |   |
| Gross weight (lb)                          | 196   |
| UPC code                                   | 8-59925-00299-2                             |
| Certifications                             | CSA, IAPMO                                  |



# Heavy-duty commercial drain pump makes bar renovations possible in a brewery

Revival Brewery Company provides a distinctive craft beer experience that appeals to everyone. It is a renewal of brewmaster Sean Larkin's passion for unique and innovative craft beers, cultivated over twenty years of creating signature brews for the preeminent breweries.

Though he'd been thinking about striking out on his own for a few years, it was an introduction to avid home brewer Owen Johnson in late 2009 that set in motion what would become Revival. After many nights of brainstorming, Revival Brewery Company decided to reinvent itself in a post-pandemic world with the timeless combination of beer and pizza. The owners created Revival Brewing & Lost Valley Pizza, a brewpub and pizzeria located in the Valley.

After reopening the brewpub in a new building, the owners had various projects lined up to improve the space, including additional bathrooms and a new bar area.

However, the brewery's new location posed a difficult plumbing situation. According to Geoff O'Leary, owner of O'Leary Plumbing & Heating, they had originally planned

to install traditional underground drain lines, but "during the initial construction of the brewery, they utilized a space without any plumbing plans available, so we had no idea what the plumbing setup looked like," explains O'Leary. "We knew there were drain lines in the floor, but we didn't know where we

wanted to install the restrooms or the bar area," he continues. "We later realized the concrete was three feet thick, making any new plumbing installation particularly difficult and expensive."

Thankfully, O'Leary knew of a product he had been using over the entire span of his 20-year plumbing career: Saniflo's above-floor plumbing pumps: a solution that would allow them to install plumbing without needing to break through that 3-inch thick concrete to install new drain lines.

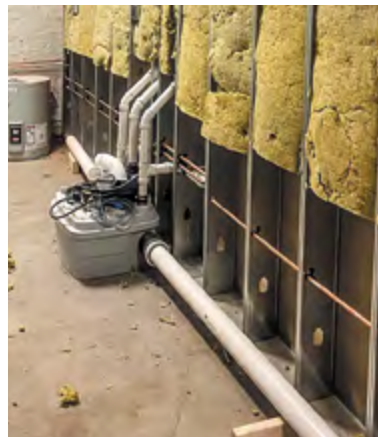
After presenting the challenges they were facing at the brewery to manufacturers representative Walter F. Morris, they introduced him to Saniflo's commercial line of drain pumps and lift stations. A Morris representative recommended Saniflo's **Sanicom 2** to handle the

drainage for a new bar area. Walter F. Morris also recommended Saniflo's **Sanicubic 2** to handle two unisex restrooms.

"Depending upon the length of your run into a drain line, it could take as little as an hour to install the **Sanicom 2**," says O'Leary approvingly. "But it was a 12-hour job for us at the brewery, because we had a lot of piping to run and had to install venting."

According to O'Leary, the installation was very easy

and went smoothly for him and his team. "We effortlessly connected the drain lines to the pump and installed a shut-off for the ejection side for maintenance down the line," he says, adding, "I was amazed how high and far the **Sanicom 2** is able to pump the drain water to the sewer line, yet the unit itself tucks right under the bar." O'Leary reports that "The bar is now up and running, and the owner's feedback has been unbelievably positive".



The Saniflo's Sanicubic 2 handles two unisex restrooms at Revival Brewing & Lost Valley Pizza.

## CHALLENGE

"During the initial construction of the brewery, they utilized a space without any plumbing plans available". The concrete was three feet thick, making any new plumbing installation particularly difficult and expensive. The brewery faced additional issues when they had to add a sink close to the pizza oven.

## SOLUTION



Sanicom® 2



Sanicubic® 2

For the complete case study, please scan QR

Saniflo SFA GROUP





# Install plumbing for a full bathroom and washing machine, using a compact lift station in a floating home

A floating home is a building, ranging from a tiny house to a four-story home, that floats on a body of water. Unlike a houseboat, a floating home is meant to be moved just once, placed on a floating concrete foundation, and permanently connected to public utilities; i.e., floating homes are permanently connected to municipal sewer, water, and electrical.

station can move up to 50 gallons of effluent per minute. In addition, the highly durable plastic enclosure for its pump and grinding blade incorporates four different exterior inlets for incoming waste lines, as well as sophisticated controls and a monitoring system to mitigate servicing issues.

“We initially looked into installing a Liberty pump, but it would have been a

Installing conventional plumbing on a floating home can present some unique and formidable challenges. That’s why the owner of a floating house enlisted the help of an engineer and a local professional plumbing company, AR Plumbing. The project’s scope involved installing the plumbing for a toilet, shower, sink, and washing machine as part of remodeling the floating home.



The Sanicubic 1 positioned in a small space under the floating home’s wooden floorboard. AR Plumbing owner and CEO Adello Rodas and his team used two of the four inlets on the Sanicubic 1.



The control panel of the Sanicubic 1 has a visual and audible alarm system (including a 15’ wire).

## CHALLENGE

We could not bust through the floating home’s concrete foundation to install conventional plumbing because of steel beams running through the concrete.

We had to find an alternative, less costly method for draining the toilet, sink, shower, and washing machine.

## SOLUTION



Sanicubic® 1

Having installed a Saniflo macerating toilet in another floating house, Rodas recommended Saniflo’s above-floor plumbing solution to the engineer. “After talking to one of Saniflo’s regional sales managers, we identified the **Sanicubic 1**

as the right product for the application,” says Rodas.

The **Sanicubic 1** is a pre-assembled simplex (single pump) grinder system, capable of discharging wastewater from multiple fixtures.

The compact, heavy-duty lift

station is easier to install and way more compact,” Rodas says. The **Sanicubic 1** was positioned in a small space under the floating home’s wooden floorboard.

According to Rodas, the entire installation, including running drainage lines from the four fixtures, took only two days. After multiple tests, Rodas reports that the completed system is performing well. Saniflo was the only realistic alternative to conventional plumbing on the current market, according to Rodas, especially for a unique and demanding application like a floating home. “I’m mostly impressed by how quiet the pump is,” he says.

For the complete case study, please scan QR

Saniflo SFA GROUP





# Revelstoke Coffee shop owner overcomes “nightmare” application challenge

The unusual name represents the founders’ inspiration for the shop: a road trip through Banff National Park in Alberta, Canada, which found him in the tiny town of Revelstoke. Revel means to enjoy oneself. Stoke means to consume for energy.

Owner Alex Stoyle liked the way those concepts fit together and came very close to having everything he needed to make his modern-style coffee shop come to life. He had the inspiration, the name, and an old space to renovate, but faced one major, unavoidable problem: plumbing.

Leasing in an almost two-hundred-year-old building, Stoyle knew it would be challenging to install a conventional, below-floor pipe line for the drainage of his equipment.

He soon realized that going the conventional route would require breaking through the floor — which wasn’t really an option, given the building’s age and the fact that there is a unit below them. “For us to run conventional plumbing, we would’ve had to ruin the unit below us and drill through the walls of the building,” he explains. “It would’ve been an absolute nightmare.”

So Stoyle had to find an alternative solution that would allow for the drainage of all his equipment, which includes two

espresso machines, a dishwasher, an ice machine, a three-base sink, two prep sinks, and a reverse osmosis water filter. Stoyle opted to call a local plumbing contractor, hoping to find a solution.

Luckily, the plumber recommended above-floor, drain pump technology without hesitation. Stoyle trusted the plumber’s expertise and his recommendation to install **Sanicom 1** drain pumps made by Saniflo. Designed for commercial and residential applications. “That’s impressive

compared to how long it would’ve taken if we were to install conventional plumbing — assuming it were even possible!” According to Stoyle, “Other plumbers coming through the coffee shop would say: ‘Wow, this is a great setup — I don’t know

if I would’ve even come up with this, but it’s pretty cool.”

Stoyle reports that the system has performed well. “The thing I’m most impressed by is how quiet the pumps are,” he says enthusiastically. “They run in the background, but they don’t interrupt conversation.

“And, to tell you the truth, I really like the way they look, because I love that kind of mechanical look,” he adds. Would Stoyle recommend Saniflo to other entrepreneurs who find themselves facing a similar application challenge? “Definitely. The **Sanicom 1** units are an excellent solution for commercial-kitchen applications where conventional plumbing just isn’t possible.”



Revelstoke Coffee

## CHALLENGE

Leasing in an almost two-hundred-year-old building, it would be challenging to install a conventional, below-floor pipe line for the drainage of his equipment. He soon realized that going the conventional route would require breaking through the floor — which wasn’t really an option, given the building’s age and the fact that there is a unit below them. To run conventional plumbing, we would’ve had to ruin the unit below us and drill through the walls of the building. “It would’ve been an absolute nightmare.”

## SOLUTION



Sanicom® 1

For the complete case study, please scan QR

Saniflo SFA GROUP



# Three new washrooms, two unisex stalls, and one handicapped bathroom, each with a sink and water closet

The historic Edgewater Hotel overlooks the majestic Yukon River, with a lineage tracing back to the Klondike Gold Rush. This particular gold rush between 1896 and 1899 involved a migration by an estimated 100,000 prospectors to the Klondike region of the Yukon in northwestern Canada.

In 2017, the hotel underwent a \$2.2 million (Canadian) renovation, offering thirty-three upgraded rooms and suites, each with a new washroom featuring fully tiled showers and glass doors. But the upgrades did not end there, as hotel ownership recently decided to add a completely new wine bar to its list of amenities. The Belly of the Bison wine bar is slated to open in June/July 2021.

The wine bar will have three new washrooms, two unisex stalls, and one handicapped bathroom, each with a sink and water closet to accommodate guests. The handicapped bathroom also has an emergency floor drain with a trap primer.

The Edgewater Hotel project, in particular, posed some unique problems. According to Albanese, the job entailed rerouting drainage from a cast iron soil pipe stack to the side of the building, while also picking up the drainage from the three new wine-bar washrooms.

“With the new washrooms added to the wine bar, I could not make the grade to tie the drainage back into the main drain line,” explains Albanese. “Along with that issue, there was no way to get around two large supporting beams for proper drainage.” Conventional plumbing wasn’t feasible. “I didn’t need to look far for a solution after explaining the situation to another contractor, who recommended Saniflo,” Albanese says.

Following a quick search on the Saniflo website, he called Saniflo Technical Support and explained the drainage issues. “That same day, I had the recommended Saniflo **Sanicubic 2VX** Vortex unit on order from my supplier and ready to be shipped.”

The **Sanicubic 2VX** uses a specially designed pump impeller to create a vortex action as the effluent enters the lift station enclosure. This technology keeps solids away from the impeller as it turns, pushing waste rapidly through the pump and to the discharge pipe. In doing so, the possibility of clogging is substantially reduced. With up to 250 gpm flow rate, the maximum height either pump can discharge is 36 feet, using two-inch diameter pipe; and 20 feet, using four-inch pipe.

To keep the hotel operational, the Albanese Mechanical team blocked off time at night to cut into the line and test and commission the Saniflo unit. “The hotel was able to run normally after the testing was complete,” he says. “The unit allowed construction to continue on this job while the hotel carried on with minimal downtime,” he continues. “It will also allow my customer to operate the new bar and will give them flexibility on when to start the basement renovation.”



The drain lines coming from the washroom loads and the load from seven hotel suites running to the Sanicubic 2VX.



Albanese installed the Sanicubic 2VX in the hotel's basement. The 4-inch discharge pipe runs from the top of the Sanicubic 2VX 10.5 feet vertically and 25 feet horizontally before tying into the existing drain line.

## CHALLENGE

Contractor Bryan Albanese overcomes unique plumbing challenge at the Edgewater Hotel by installing a Saniflo Sanicubic 2 Vortex to reroute drainage from 29 different plumbing fixtures, while minimizing downtime and keeping the hotel operational. With the new washrooms added to the wine bar, we could not make the grade to tie the drainage back into the main drain line.

## SOLUTION



Sanicubic® 2VX

For the complete case study, please scan QR

Saniflo SFA GROUP





# Optimizes the production efficiency of a prototyped machine to coat garments in mass quantities

Eastern Tech specializes in manufacturing “pretreatment” chemicals for digital printing on t-shirts and garments. To optimize production efficiency, the company prototyped a machine to coat garments in mass quantities. This process is called “Washer-Extractor Processing for DTG Printing,” which changes how the Direct-To-Garment [DTG] industry can apply pretreatment onto blank garments for digital printing. The technology lets the user load cotton garments into a larger commercial-grade washing machine called a “washer-extractor.”

“Eastern Tech works directly with OEM partners, developing solutions for the market,” says Eastern Tech’s R&D Engineer Mark Pham. “We target Ink Innovations in everything that we do.” With innovation top of mind, Eastern Tech looked to replace an existing drain pump used in the prototype’s liquid reuse system. This, in turn, would result in a faster, more efficient process.

Pham’s team searched for pressure drain pumps online and discovered Saniflo’s **Sanicom 1**, a simplex drain pump designed for heavy-duty commercial applications. “The core value of the Saniflo pump to us was the ability to transfer fluid faster to

increase efficiency and stabilize our system. Since the fluid moves faster, everything is more stable.”

The one-horsepower **Sanicom 1** simplex drain pump is designed to pump gray water away from demanding commercial applications. The pump, which handles up to 194°F water, is designed to withstand liquids with highly acidic properties. The pump can drain multiple water fixtures simultaneously, discharging gray water up to 25 feet vertically and/or 250 feet horizontally. Gray water enters through one of two side inlets before being pumped to the drain line.



The pretreat coming from the washing machines flows into the Sanicom unit. The Sanicom pumps the liquid five feet via hose into the reuse tank connected to the washing machine.

After reviewing the functionality of the **Sanicom 1**, Eastern Tech felt confident it could be a great solution for their new washer-extractor prototype. The next step was to install the unit and run tests. According to Pham, the **Sanicom 1** performed very well during the first testing prototype. Which is why the company also decided to test Saniflo’s **Sanicom 2**, a heavy-duty, duplex drain pump in their latest prototype.

Eastern Tech works with Saniflo as an OEM (Original Equipment Manufacturer) account. Since using the **Sanicom 1** as part of the first prototype, the company has purchased twenty additional Sanicom pumps for their washer-extractor processing units.

“We decided to upgrade our product line with the **Sanicom 2** pump, which is part of why we set it up in the first place,” explains Pham. “Every system is stable, and everything works well.”

## CHALLENGE

With innovation top of mind, Eastern Tech looked to replace an existing drain pump used in the prototype’s liquid reuse system. The function of the drain pump is to pump the pretreat back into a tank.

After conducting research online, Eastern Tech discovered a modular drain pump solution that would provide stronger horsepower. This, in turn, would result in a faster, more efficient process.

## SOLUTION

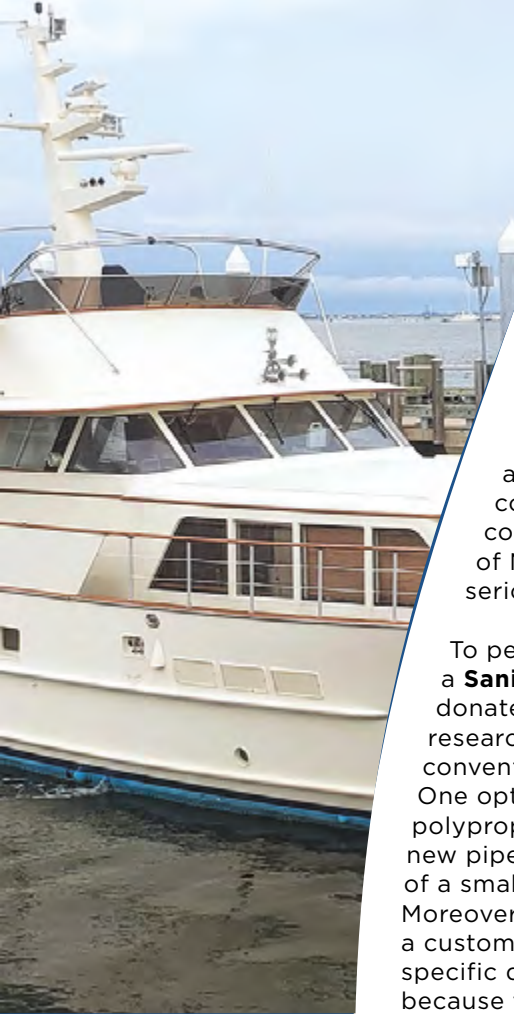


**Sanicom® 1**

For the complete case study, please scan QR

Saniflo SFA GROUP





# Install plumbing for a full bathroom and washing machine, using a compact lift station in a floating home

MANTA (Marine Science And Nautical Training Academy), a non-profit organization offers a summer Caribbean field study course on the biology and the conservation of coral reefs. President of MANTA, knew he had to fix a serious plumbing problem.

To perform that task, MANTA installed a **Sanicubic 1** Simplex Grinder System, donated by Saniflo. Day extensive researched various systems, including conventional sewage ejector packages. One option included a Duracast polypropylene tank that required creating new pipe connections and the installation of a small pump and float switch.

Moreover, Day would've had to fabricate a custom tank to specific dimensions because the vessel's mechanical room had only limited space for another piece of equipment. "It was looking like a real headache," says Day. When Day found the **Sanicubic 1** online, he knew it was the perfect solution. Shipped fully assembled, the compact, heavy-duty lift station offered better grinding performance

with the capability of pumping up to 50 gallons of effluent per minute.

Furthermore, the highly durable plastic enclosure for its pump and grinding blade incorporates four different exterior inlets for incoming waste lines, as well as sophisticated controls and a monitoring system to mitigate servicing issues.

The **Sanicubic 1** is rated IP68 and comes with an external control and alarm.

Back on land, the system is designed for applications where the sewer line or the septic tank sits above or away from the structure. Featuring a one-horsepower motor and a fast-rotating stainless-steel cutting blade, the **Sanicubic 1** minimizes the possibility of clogs by quickly reducing solids — including larger sanitary products — into a slurry that can be pumped up to 36 feet vertically or 328 feet horizontally through a 1.5-inch, rigid pipe.

Once at sea, the blackwater tank will be evacuated every several days through another length of 1.5-inch PVC discharge pipe with the help of an existing macerator pump (not made by Saniflo). The frequency depends on where the RV MANTA docks,

because, according to Day, the blackwater pump-out facilities in the British Virgin Islands can be fairly limited. In most areas, the vessel will go offshore to discharge the blackwater tank into waters offshore where this is permitted. According to Day, the **Sanicubic 1** system has performed beautifully after testing it on other trips. Even though the system was

generously donated, the **Sanicubic 1**, installed, still would've been the more economical choice, compared with fabricating a custom system, according to Day. He praises the reliability and "plug-and-play" feature of the system, since it removes the uncertainty of a piecemeal solution and concerns about unsanitary leaks and odors. "The ease of installation saved considerable labor costs," adds Day. "The product is outstanding, and the customer service, technical support and follow-up at Saniflo have been exemplary," he continues.



Inside the RV MANTA's mechanical room, showing the **Sanicubic 1** and the 1.5-inch PVC piping to two of the **Sanicubic 1**'s four input ports.

## CHALLENGE

The pneumatic flush system previously used air pressure to drive effluent from the toilets into a blackwater tank.

The Microphor specifications recommend no more than 18 inches of vertical rise for the 60 psi capacity of the system.

But the blackwater tank sits 6 feet above the waste lines, thus exceeding the system's lifting capabilities.

Each teaching expedition would involve 16-18 people living and working on the vessel for days at a time.

## SOLUTION



**Sanicubic® 1**

For the complete case study, please scan QR

Saniflo **SFA** GROUP



## NEED HELP WITH YOUR PROJECT?

- Specifying
- Product Selection
- Quotation
- Installation Questions
- Planning

Let us know about your jobs!  
Saniflo's Spec team is here to help!

We'll find the perfect products and solution  
for your projects!

For pump sizing and selection, for assistance on specifications,  
or for any questions related to a specific project,  
please contact us:

### US

[sf-sales@saniflo.com](mailto:sf-sales@saniflo.com)



### Canada

[projects@saniflo.ca](mailto:projects@saniflo.ca)



Saniflo  SFA GROUP

US: 800-571-8191  
CDN: 800-363-5874

[saniflo.com](http://saniflo.com)  
[saniflo.ca](http://saniflo.ca)

